

Energy-saving LED wrap at a pocket-friendly price.

Replacing fluorescent fixtures is now
more economical than ever.

GUS[®] JR



Visit rablighting.com
to see which models
are DLC listed.

RAB Indoor

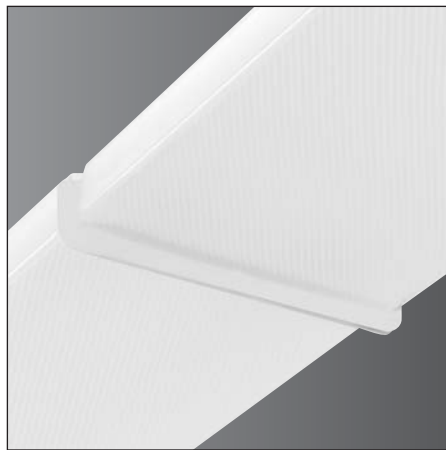
GUS[®] JR



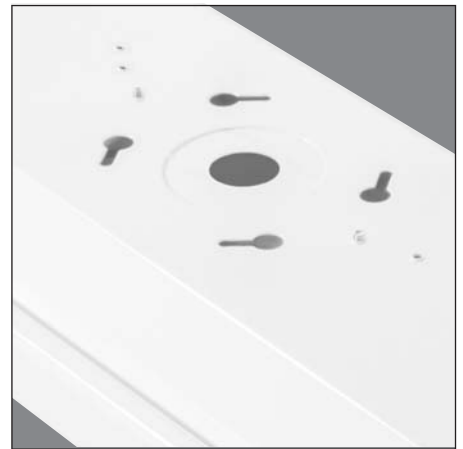
- Affordable wrap fixture available in 2 ft (20W) and 4 ft (40W) models
- Replaces single-lamp and 2-lamp T8 for up to 50% energy savings
- All models are DLC listed
- Through wiring for end-to-end connection
- Two mounting options: surface or chain (with v-hooks)
- Battery backup available
- Available with factory-installed Lightcloud[®] Controller



Prismatic wrap-around lens for smooth light distribution



Use the Through Wiring Kit to connect multiple GUS JR fixtures for quick, easy row mounting or daisy chaining.



Can be surface mounted, mounted to a standard junction box, or with chains (*with v-hooks*)



Field-replaceable lens



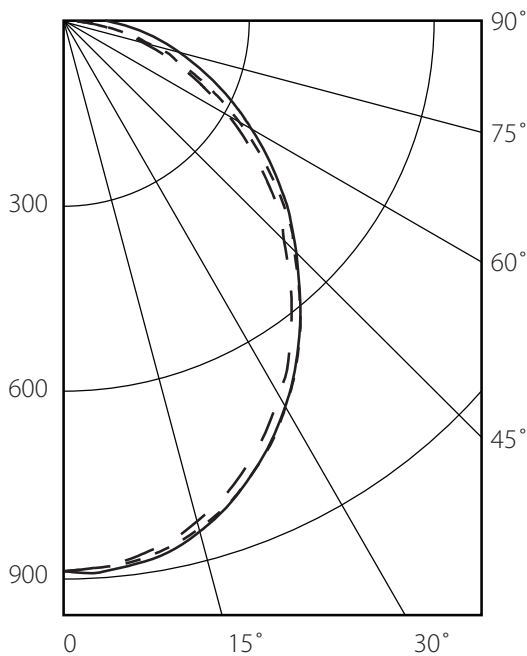
GUS JR comes standard with 0-10V dimming



Available with factory-installed Lightcloud[®] Controller

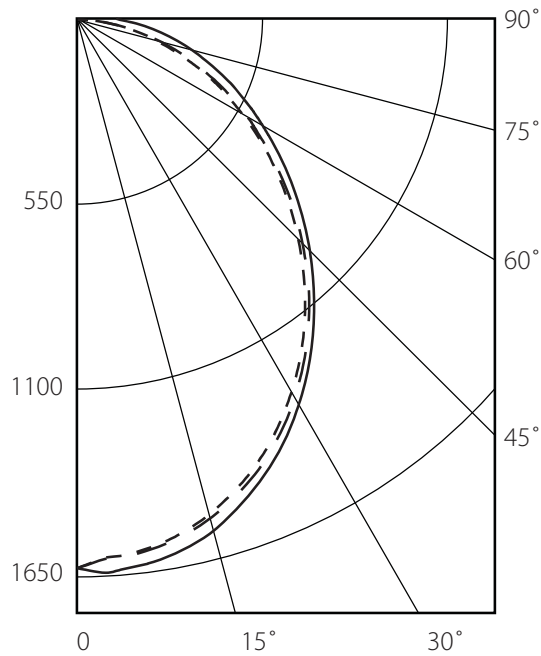
GUS JR 20W (2 ft) - 5000K

Photometric Report #RAB04377



GUS JR 40W (4 ft) - 5000K

Photometric Report #RAB04379



LEGEND: 0-deg - - - 90-deg ——— 180-deg ———

UL Listing: Suitable for damp locations

LEDs: Long-life, high-efficacy, surface-mount LEDs

Lifespan: 50,000-hour LED lifespan based on IES LM-80 results and TM-21 calculations

Drivers:

20W: Constant Current, Class 2, 100-277VAC, 50-60Hz, 2.5kV, 120V: 0.19A, 208V: 0.11A, 240V: 0.10A, 277V: 0.09A, Dimmable

40W: Constant Current, Class 2, 100-277VAC, 50-60Hz, 2.5kV, 120V: 0.34A, 208V: 0.21A, 240V: 0.19A, 277V: 0.15A, Dimmable

Housing & Endcaps: Sheet metal stamping, 24 gauge cold-rolled steel. Endcaps include a knockout for side conduit entry or daisy chaining.

Mounting: Surface mount. Can also be mounted with chains or v-hooks (*sold separately*).

Lens: Prismatic acrylic lens

Reflector: Sheet metal forming, 24 gauge, cold-rolled steel with white powder coat

Cold Weather Starting: The minimum starting temperature is -20°C (-4°F)

Maximum Ambient Temperature: Suitable for use up to 40°C (104°F) ambient temperatures

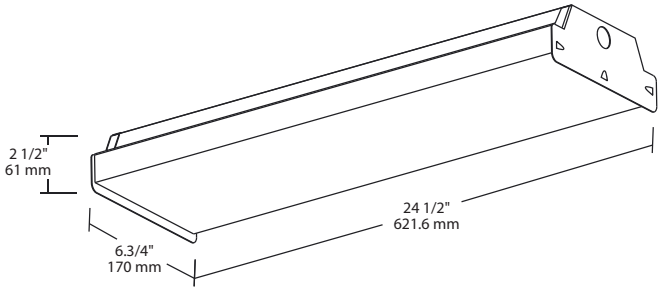
Color Stability: LED color temperature is warranted to shift no more than 200K in CCT over a 5-year period.

Color Uniformity: RAB's range of CCT (Correlated Color Temperature) follows the guidelines of the American National Standard for Specifications for the Chromaticity of Solid State Lighting (SSL) Products, ANSI C78.377-2017.

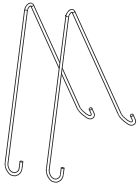
Green Technology: Mercury and UV free. RoHS-compliant components.

Dimensions, Weights & Accessories

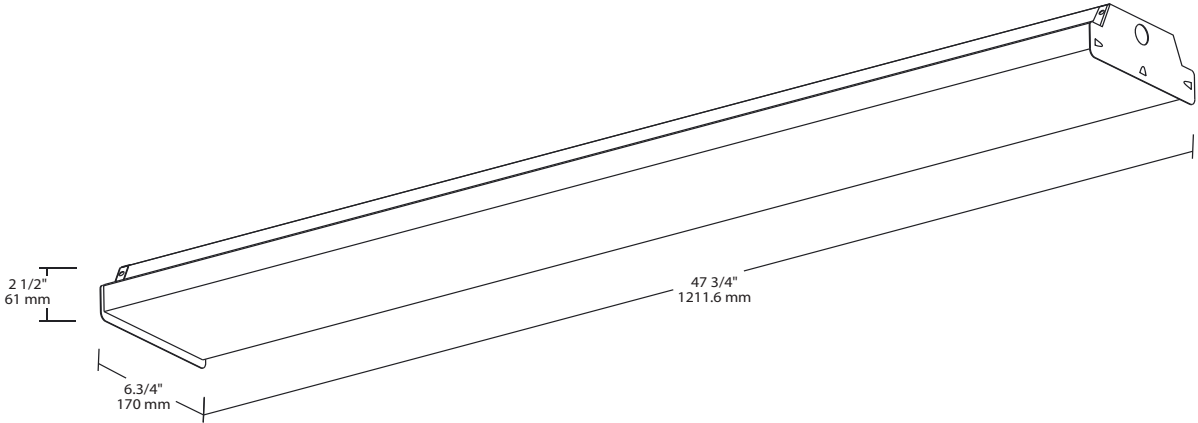
GUS JR 2 ft
Weight: 5.1 lbs.



V-Hook
VHOOKGUSJR



GUS JR 4 ft
Weight: 9.0 lbs.



Specifications

GUS JR 20W (2 ft)

Color Temperature	5000K	4000K	3500K
Input Watts	22	22	22
Output Lumens	2532	2620	2527
Lumens Per Watt	116	120	114
Color Rendering (CRI)	82	82	83

GUS JR 40W (4 ft)

Color Temperature	5000K	4000K	3500K
Input Watts	40	40	40
Output Lumens	4671	4834	4662
Lumens Per Watt	117	121	116
Color Rendering (CRI)	82	82	83

Ordering information

Product Family	Length	Wattage	Color Temp	Finish	Voltage	Control Options	Options
GUSJR		—		W	U		
2	2 feet	20	20W (2 ft)	850	5000K	Blank	No Option
4	4 feet	40	40W (4 ft)	840	4000K	/LC	Lightcloud® Controller
			835	3500K			
				W	White	U	120-277V, 0-10V Dimming

*Only available in 4FT (40W)